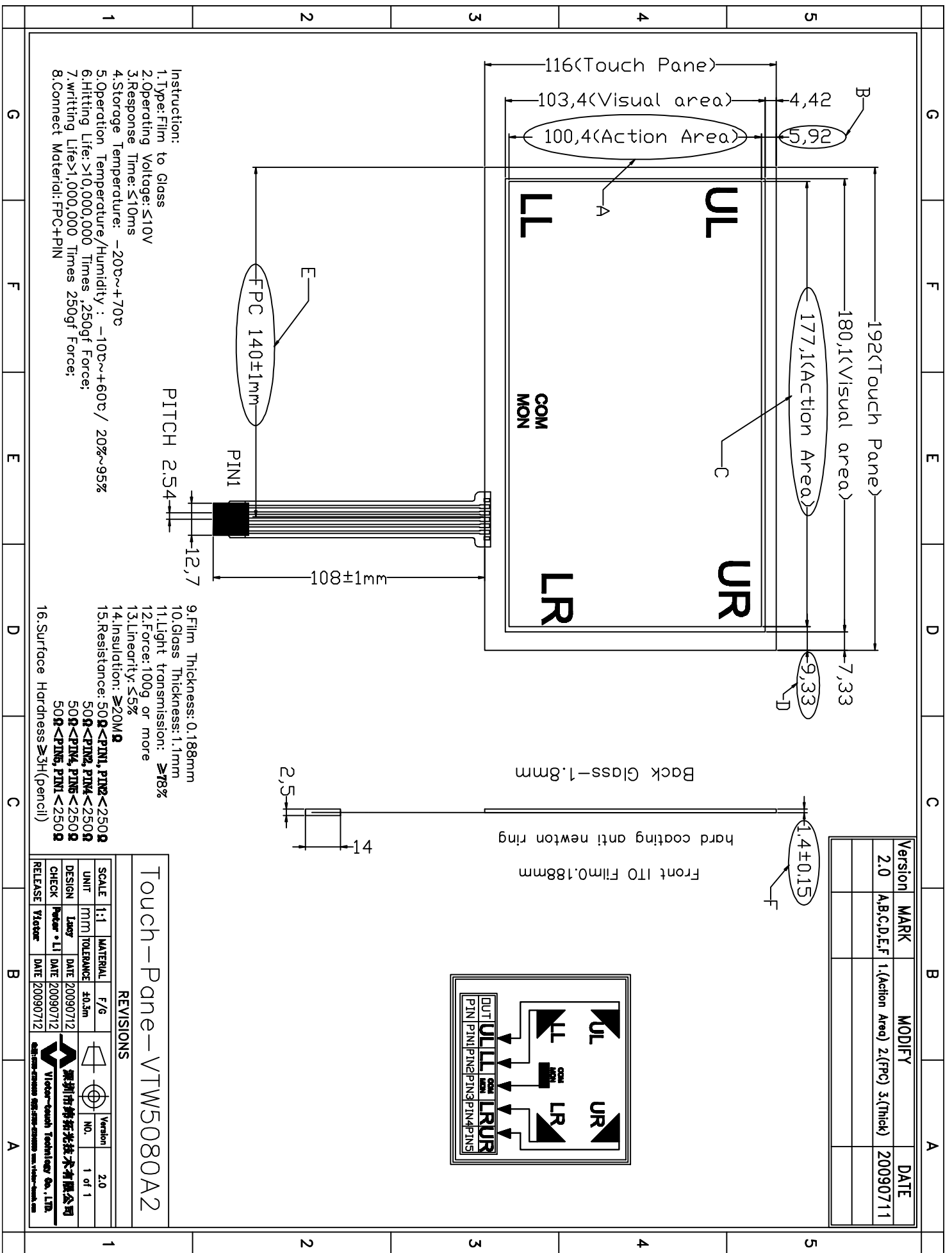
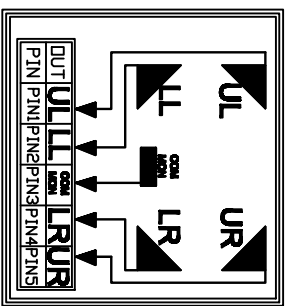


| Version | MARK        | MODIFY                            | DATE     |
|---------|-------------|-----------------------------------|----------|
| 2.0     | A,B,C,D,E,F | 1.(Action Area) 2.(FPC) 3.(thick) | 20090711 |
|         |             |                                   |          |



Front ITO Film 0.188mm  
hard coating anti newton ring  
Back Glass-1.8mm



- Instruction:
- 1.Type: Film to Glass
  - 2.Operating Voltage:  $\leq 10V$
  - 3.Response Time:  $\leq 10ms$
  - 4.Storage Temperature:  $-20^{\circ}C \sim +70^{\circ}C$
  - 5.Operation Temperature/Humidity:  $-10^{\circ}C \sim +60^{\circ}C / 20\% \sim 95\%$
  - 6.Hitting Life:  $>10,000,000$  Times ,250gf Force;
  - 7.writing Life:  $>1,000,000$  Times 250gf Force;
  - 8.Connect Material: FPC+PIN

- 9.Film Thickness: 0.188mm
- 10.Glass Thickness: 1.1mm
- 11.Light transmission:  $\geq 78\%$
- 12.Force: 100g or more
- 13.Linearity:  $\leq 5\%$
- 14.Insulation:  $\geq 20M\Omega$
- 15.Resistance:  $50\Omega < PIN1, PIN2 < 250\Omega$   
 $50\Omega < PIN4, PIN5 < 250\Omega$   
 $50\Omega < PIN6, PIN1 < 250\Omega$
- 16.Surface Hardness  $\geq 3H$ (pencil)

# Touch-Pane-VTW5080A2

## REVISIONS

| SCALE   | 1:1         | MATERIAL  | F/G         | Version | 2.0    |
|---------|-------------|-----------|-------------|---------|--------|
| UNIT    | MM          | TOLERANCE | $\pm 0.3mm$ | NO.     | 1 of 1 |
| DESIGN  | Layer       | DATE      | 20090712    |         |        |
| CHECK   | Pecker * LI | DATE      | 20090712    |         |        |
| RELEASE | Victor      | DATE      | 20090712    |         |        |

